

Petra Palumbo

DESIGN TILE AND TRIMS COLLECTIONS



CONTENTS



1. BEIRUT TILES & CORNERS



2. COSMO TILES & TRIMS



3. DAISY TILES



4. DITSY TILES & TRIMS



5. PINSTRIPE TILES



6. POMEGRANATE



7. TARTAN TILES & TRIMS



8. TICKING TILES & TRIMS

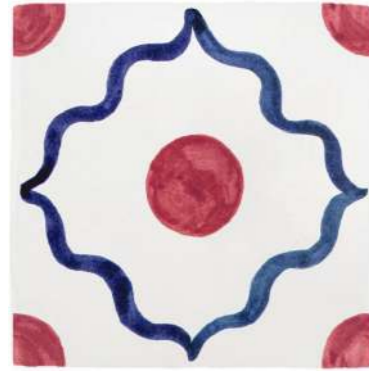


9. DADO & STUD TRIMS



BEIRUT TILES

Inspired and paying tribute to Petra's Lebanese ancestry, this collection is a celebration of the beautiful shapes and colours that are reminiscent of magical Beirut.



BLUE & BERRY



BROWN & MINT



BROWN & SKY BLUE



GREEN & PEACH



GREEN & BERRY



LILAC & MINT



NAVY & SKY BLUE



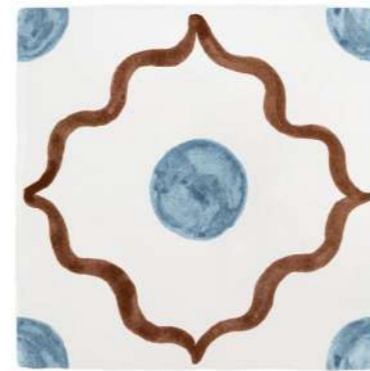
CHOCOLATE & PEACH



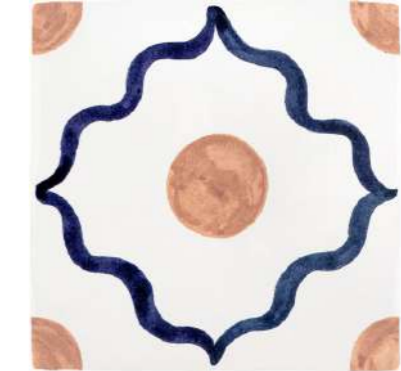
OLIVE & BERRY



PURPLE & MINT



CHOCOLATE & SKY BLUE



BLUE & PEACH



PURPLE & BERRY



ORANGE & MINT



GREEN & SKY BLUE



NAVY & PEACH



BEIRUT CORNERS

Inspired and paying tribute to Petra's Lebanese ancestry, this collection is a celebration of the beautiful shapes and colours that are reminiscent of magical Beirut.



BERRY



MINT



BLUE



PEACH

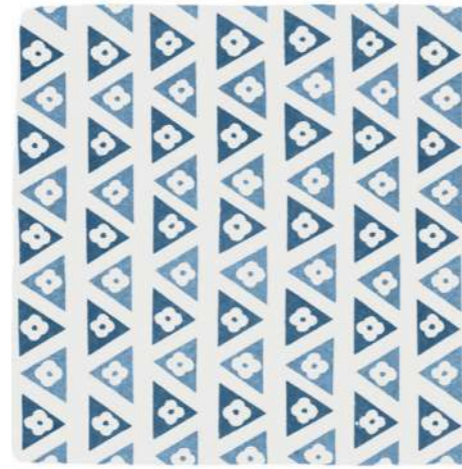


COSMO TILES

Our Cosmo collection of tiles and trims combine a modern aesthetic with timeless appeal, making them a versatile choice for various interior styles — from minimalist to eclectic to everything in between.



SANGUINE



AZURE



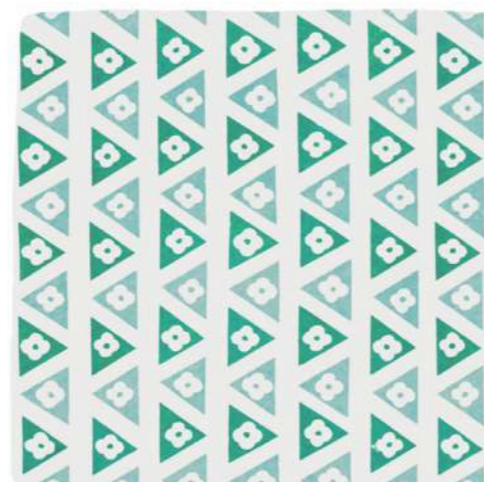
MOSS



TUMERIC



BELLINI



SEAFOAM





COSMO DADO TRIMS

Designed to be paired with our Cosmo tile, our Cosmo trims create visual continuity and harmony.



SANGUINE



AZURE



MOSS



BELLINI



SEAFOAM



TUMERIC

DAISY TILES

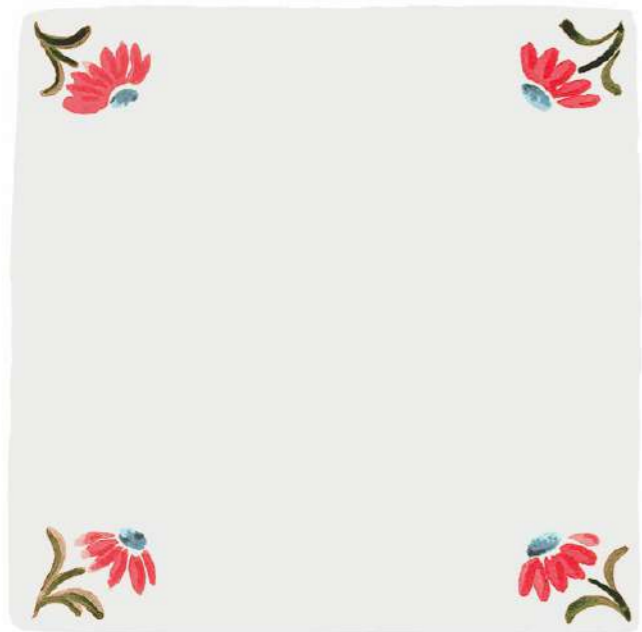
Delicate and feminine with a vintage flair, our Daisy tiles would look fantastic as a kitchen backsplash, around a window or in a bathroom.



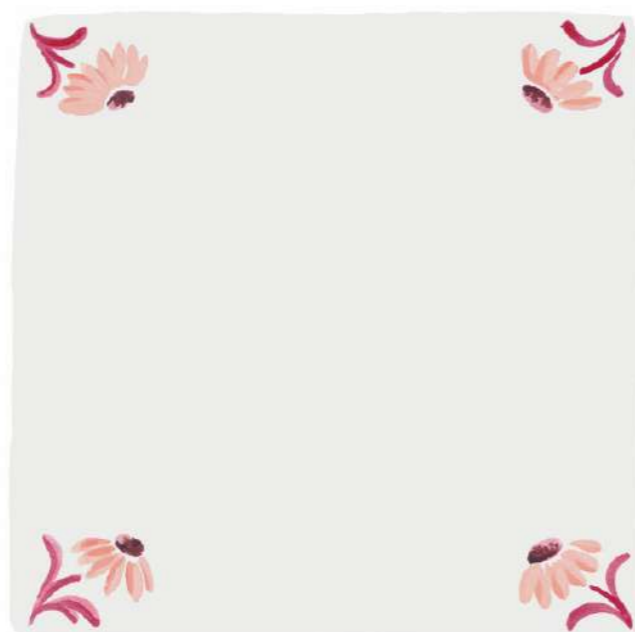
BLUE



MINT



RED



PINK





DITSY TILES

Sweet and simple in its repeating pattern and small scale, this tile design automatically enlarges a space.



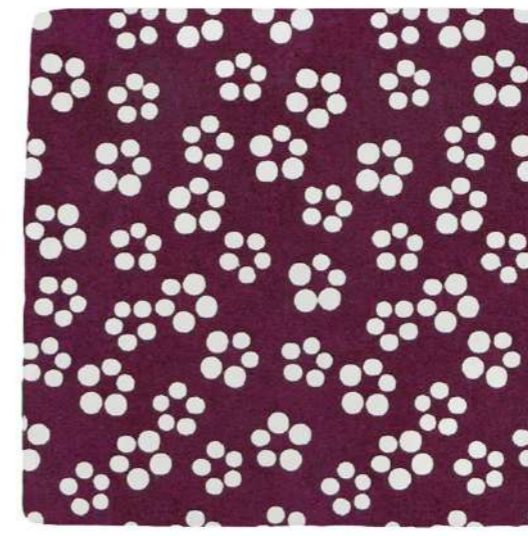
NAVY



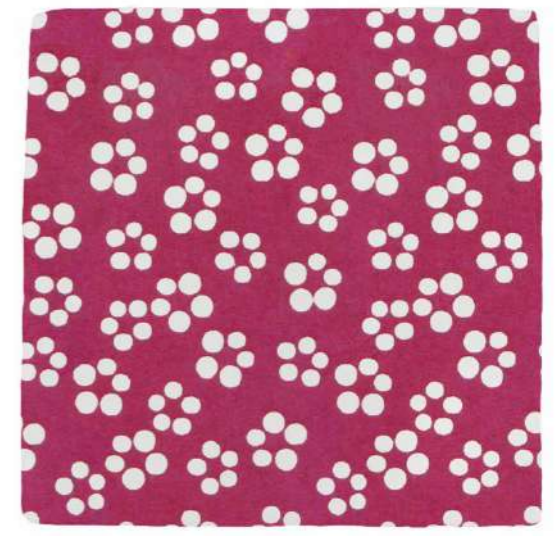
CERULEAN



FOREST



AMETHYST



CHERRY



BLUSH



PEAR



OLIVE



WHEAT



TAUPE

DITSY DADO TRIMS

Designed to be paired with our Ditsy tile, our Dado trims create visual continuity and harmony.





PINSTRIPE TILES

Designed by Petra to be mixed and matched alongside our illustrated Delft Tiles or by themselves, this Pinstripe Delft collection features the same colours as the delfts: blue, green, crimson, mustard, manganese and sepia. Stripes are a fantastic way to add instant energy to a room and they can create the illusion of space.



BLUE DELFT



CRIMSON DELFT



PRIMROSE



GREY



MUSTARD DELFT



GREEN DELFT



PINK



TEAL



MANGANESE DELFT



SEPIA DELFT



BERRY

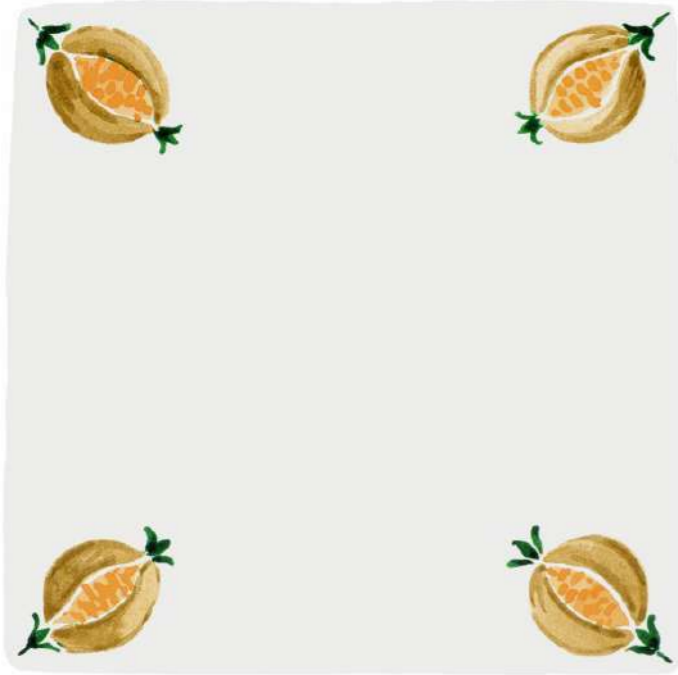


STONE



POMEGRANATE TILES

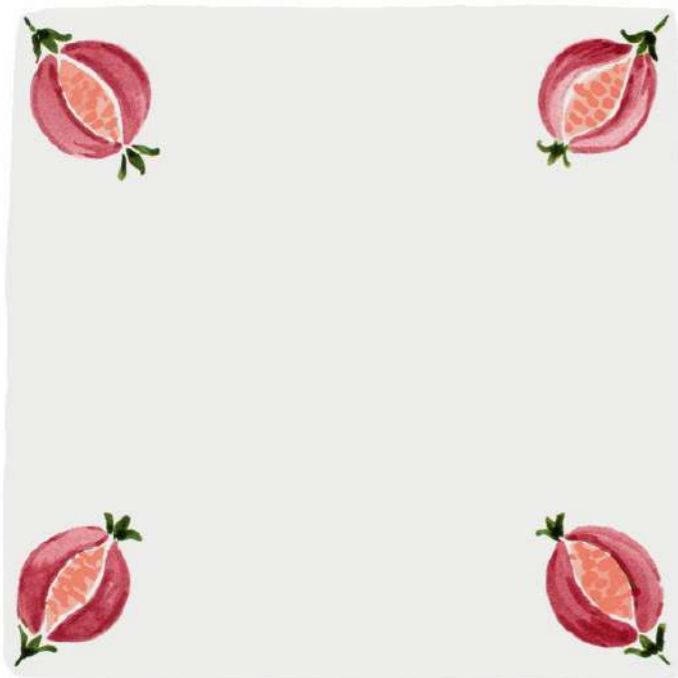
The pomegranate symbolising sanctity, fertility, and abundance in middle-eastern culture. This light-hearted and airy design would work really well in a bathroom or around a child's bedroom window.



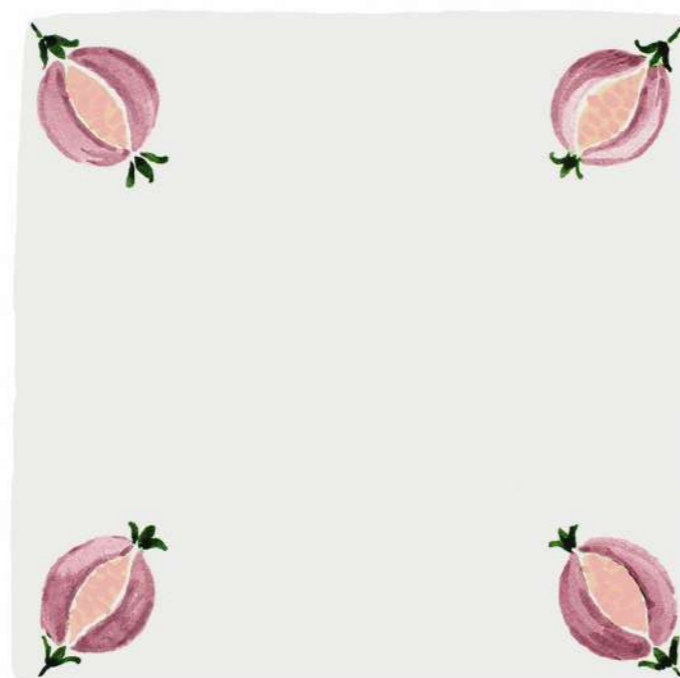
OCHRE



TEAL



PUNCH



CERISE

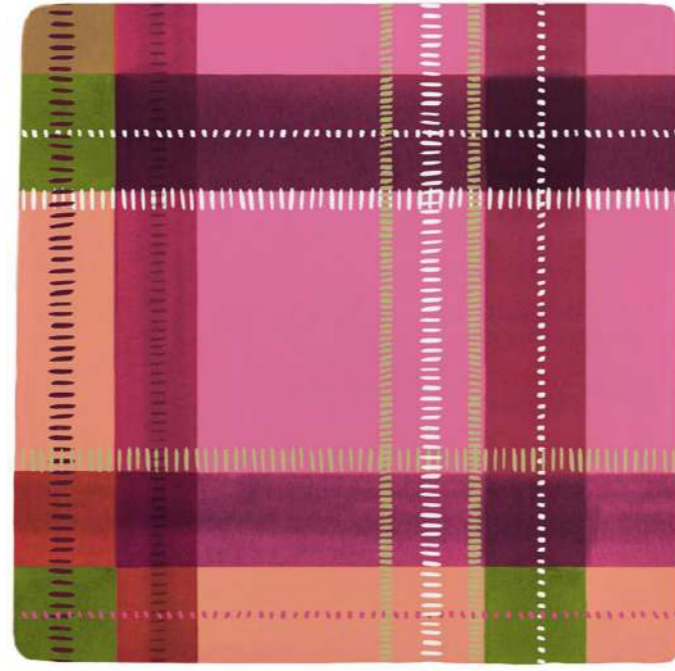


TARTAN TILES

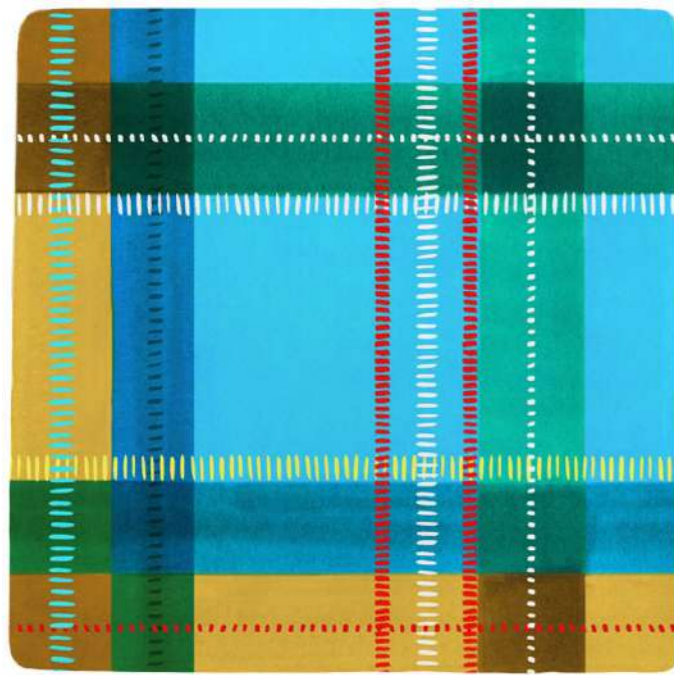
Paying homage to the place Petra now calls home, the Scottish Highlands, this new range of hand-decorated Tartan Tiles is uplifting and bright and consists of four striking colour-ways. They're a playful, painterly take on the traditional pattern.



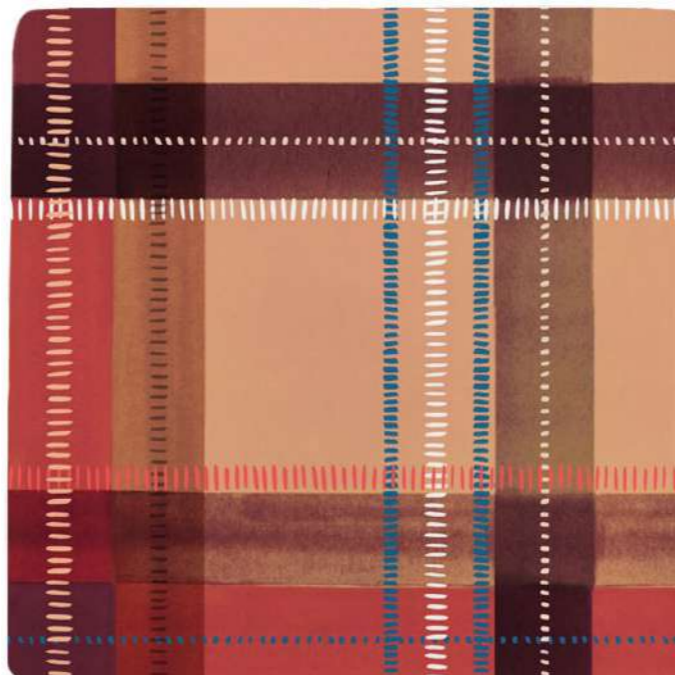
CARMINE



CURRANT



AQUA CYAN



CHESTNUT



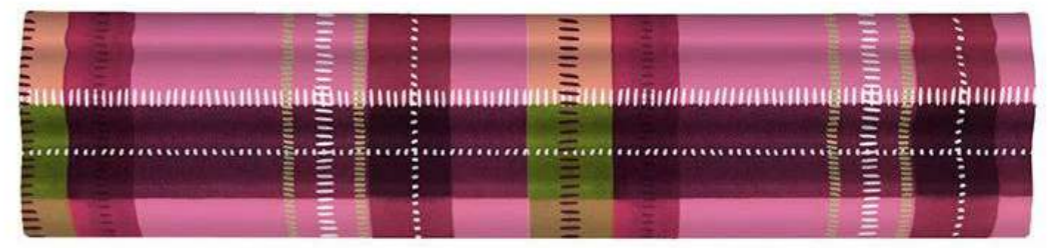


TARTAN TRIMS

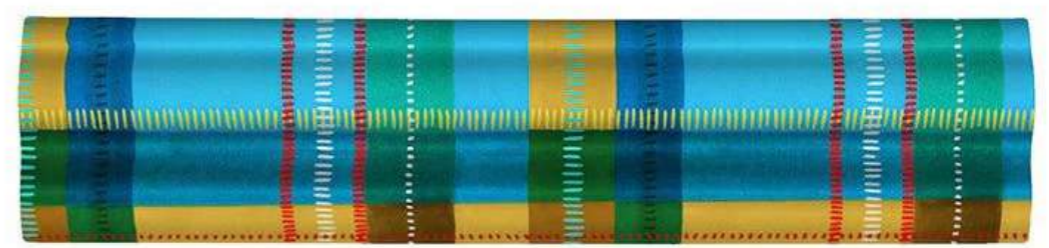
Designed to be paired with our Tartan tile, our Tartan Dado trims create visual continuity and harmony.



CARMINE



CURRENT



AQUA CYAN



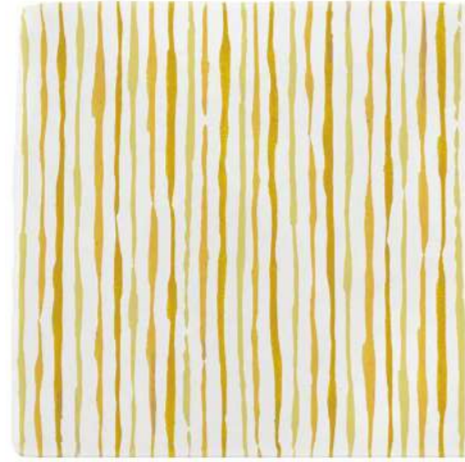
CHESTNUT

TICKING TILES

Add some tactile warmth and character to your space with our timeless Ticking Stripe Tiles.



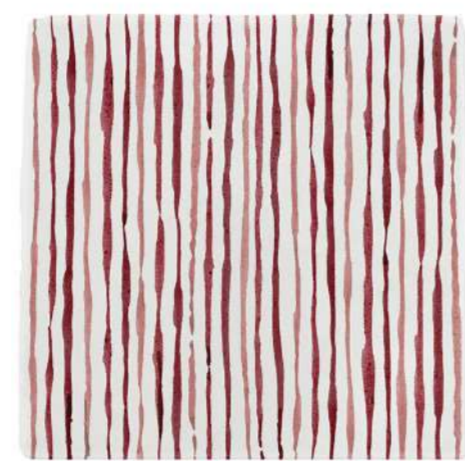
BLUE



MUSTARD



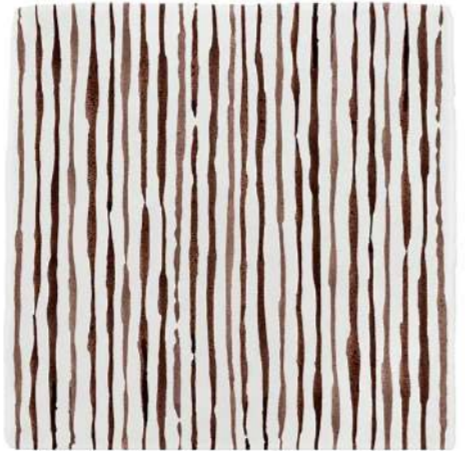
MANGANESE



CRIMSON



GREEN

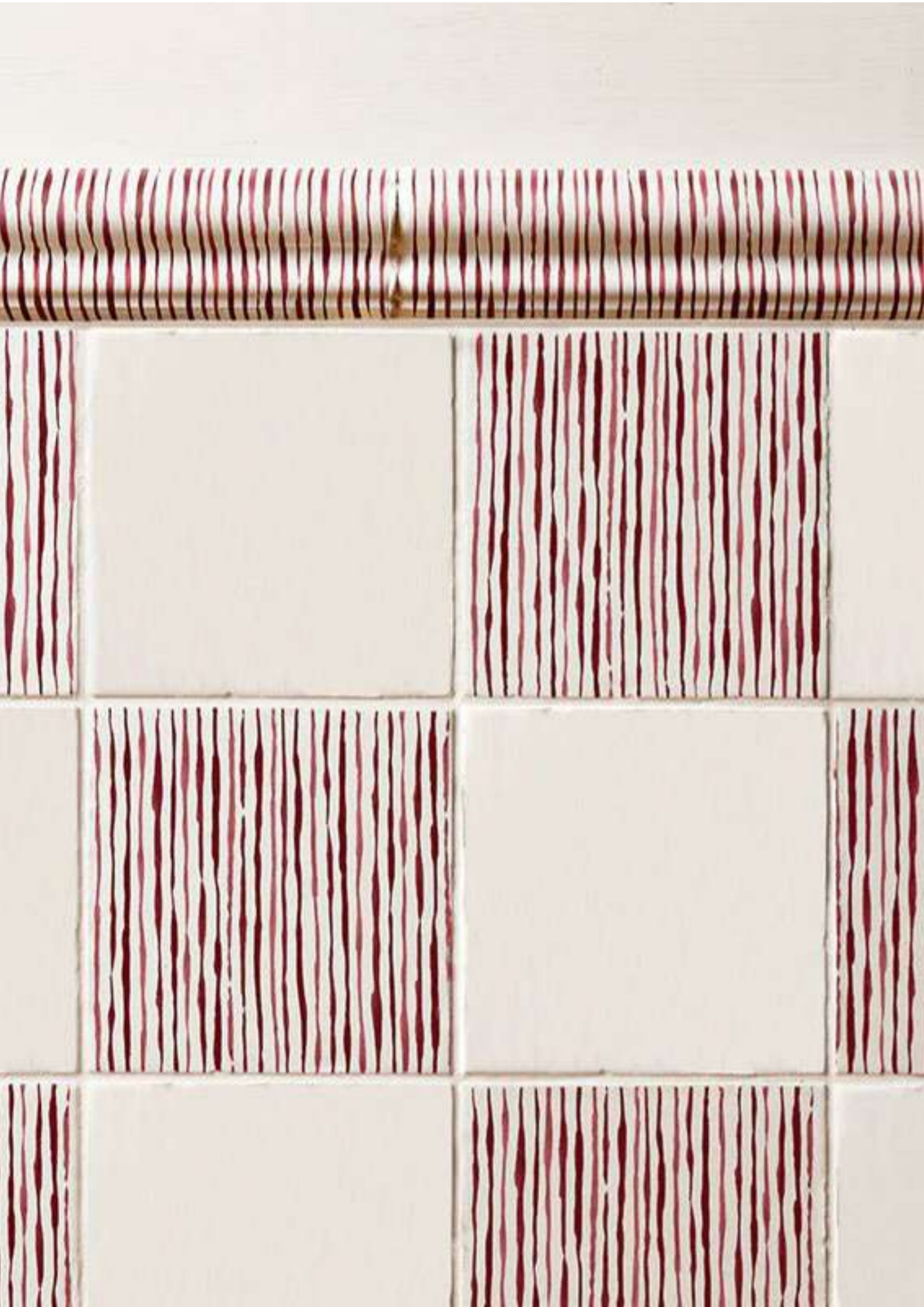


SEPIA



TICKING STRIPE DADO TRIMS

Designed to be paired with our Ticking Stripe tile, our Ticking Stripe trims create visual continuity and harmony.



BLUE



MUSTARD



MANGANESE



CRIMSON



GREEN



SEPIA

DADO & STUD TRIMS

WHITE DADO TRIM



2" / 5cm

9" / 23cm

WHITE STUD TRIM



0.5" / 2cm

8" / 20cm



TILE CARE

Taking care of your Petra Palumbo tiles keeps them looking fresh and helps them last longer. Regular cleaning prevents things like cracks or mould, so you won't have to worry about costly repairs later. Plus, it helps keep your home looking great.



CARE

For tile longevity, we recommend that you limit exposure to direct sunlight to ensure no colour fading occurs. Steer clear of abrasive pads, steel wool, metal brushes, or scouring pads, as they can scratch the glaze.

CLEANING

Use a mild, non-abrasive, pH-neutral cleaner to clean your tile surfaces. Choose a cleaner that is free from harsh chemicals or abrasives that can harm your tiles.

To make one yourself by filling a spray bottle with 1/4-cup baking soda, 2 tbsp. dish soap and 2 cups water. Squirt the spray over the tiles, and wipe down with a damp cleaning rag. Wipe the tile with a damp cloth once more, and follow with a dry towel to prevent water spots



Petra Palumbo

